

SEEŌNEE

Team Building Base

Conferences

Meetings

Functions

Wellness



Woodhouse
Adventure Park

ABOUT US

Located in picturesque Piccadilly in the Adelaide Hills, Woodhouse Adventure Park specialises in creating memorable experiences and our SEEONEE venue is certainly no exception. While only a 25-minute drive from Adelaide CBD, you'll feel a million miles from the city and office distractions.

Two separate spacious, light-filled rooms with communal kitchen and gathering area open out onto 125 acres of undulating, gumtree-studded countryside, guaranteed to lift spirits and open minds.

You can hire SEEONEE as a venue with DIY activities and catering, or work with us to add in catering and a variety of facilitated team building adventures.

[Drop us an email](#) with your preferred dates and times, approximate number of guests and rough plan of how you want your team's adventure to play out... and we'll start tailoring an experience to your requirements and desired outcomes.

For now here's some of the practical information for your next important event.

All prices include GST.



VENUE HIRE

SEENEE has two light-filled rooms with exactly the same dimensions (6.5m x 10.8m). One room could be used for your meeting or event, and the second room could be used for break-out discussions, lunch and tea breaks, or a mini expo.

EACH MEETING ROOM FEATURES:

- 75" wall mounted television (including HDMI cable for laptop connection)
- 4 wall-mounted speakers with wireless connectivity + a hand-held microphone if required
- WiFi available for all guests
- Reverse cycle air-conditioning and ceiling fans
- External glass doors opening onto serene views over Cox Creek
- 5 double power points

KITCHEN INCLUSIONS:

- Espresso coffee machine (including coffee beans and milk)
- Urn and tea station + filtered water
- Fridge and freezer
- Microwave and oven (no stove)
- Dishwasher
- Cutlery, side plates, bowls, coffee cups, glass tumblers, wine glasses

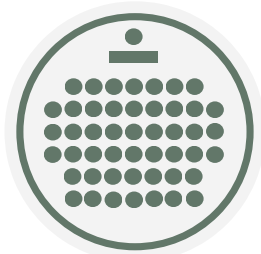
FURNITURE & OTHER INCLUSIONS:

- 10 tables (150cm x 75cm) + 60 sleek black chairs
- Whiteboard and markers
- Flipchart pad on easel
- Lectern
- Private BBQ
- Fire drum for campfire (outside bushfire danger season)

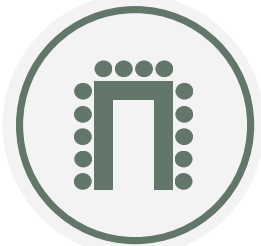


ROOM CONFIGURATIONS

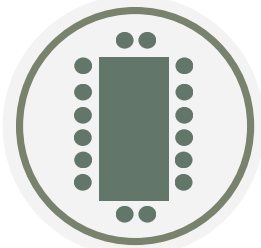
THEATRE
up to 48



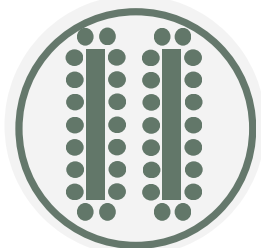
U-SHAPE
14-20 people



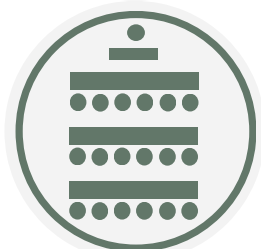
BOARDROOM
12-20 people



LONG TABLES
2 x 18 or 3 x 14



CLASSROOM
3 x 6



COCKTAIL up to 60 people



PRICING & PACKAGES

With adventure activities and 125 acres of natural wonderland at your fingertips, SEEONEE is not your average conference, workshop or meeting venue... but where's the fun in planning an average event?

We've pulled together some packages to get your creative juices flowing, starting with room hire only, through to facilitated activities, catering and accommodation!

SEEONEE Venue Hire

Full day 9am-5pm (other hire periods by negotiation)
Half day 9am-12.30pm or 1.30pm-5pm

- **One room full day: \$550** (shared access to kitchen)
- **One room half day: \$300** (shared access to kitchen)
- **Both rooms: \$800** (exclusive access to kitchen)

Add Adventure Activities

- Full day access (9am to 5pm) to **DIY self-led activities** for up to 20 people included in your SEEONEE hire (included in full day hire only), additional \$20 per person
- 3-hour **facilitated team building activities** \$240 (for up to 20 people)
- 1.5-hour **private Tube Slide session** \$240 (for up to 20 people) or \$380 (for up to 40 people)
- 1.5-hour **private outdoor Laser Skirmish session** \$24 per person (minimum 10 people, maximum 40)

See the following **ACTIVITY PACKAGES** for full details...



ACTIVITY PACKAGES

PACKAGE PRICES ARE FOR MONDAY TO FRIDAY
BOOKINGS (weekend pricing on application)

Woodhouse Adventure Park (proudly owned and managed by Scouts SA) is a unique property offering an active and fun day out for corporate, sporting and leadership groups of all ages. There are so many awesome activities at your fingertips, and our energetic Activity Facilitators are available to run fun outcome-based team building activities.

OPTION 1: DIY Self-led Activities

One of the best of its kind in Australia, Woodhouse's famous Challenge Hill is an obstacle course designed to bring you together as a team and challenge your skill and bravery. You will find yourselves stretched physically and mentally as you crawl, climb, swing and splash your way through 30 obstacles, but the biggest challenge is in your ability to work as a team and show leadership skills.

You'll also have access to Disc Golf, The Labyrinth (split-level maze), Cameron's Climb outdoor bouldering challenge and orienteering.

Fee: Full day access (9am to 5pm) for up to 20 people included in full-day SEEONEE hire.
Additional people charged at \$20 per person per day.



ACTIVITY PACKAGES

Add to your SEONEE venue hire ...

OPTION 2: Facilitated Team Building Activities

Up to 3 hours of activities led by Woodhouse staff using our outdoor adventure equipment with twists to deliver targeted team building outcomes.

- Crawl, climb, swing and splash your way around Challenge Hill obstacle course.
- Weave your way through The Labyrinth split-level maze decoding the words at the 17 dead ends.
- Tackle Cameron's Climb - the ultimate outdoor multi-dimensional bouldering challenge.

If you're looking for something less strenuous let us tailor an experience that takes in the natural beauty of the property and surrounding area, with one of the orienteering or fun photo hunts, a walk to Mount Lofty Botanic Garden... or try your hand at Disc Golf (just like normal golf but with a frisbee!).

ADDITIONAL FEE: \$240 (up to 20 participants)



ACTIVITY PACKAGES

Add to your SEEONEE venue hire ...

OPTION 3: Private Tube Slide Session (1.5 hours)

Burn off some energy after a day of meetings or simply have some fun as you speed down two 100 metre slides on inflatable tubes. Time on Tube Slide can be reduced to include another activity by negotiation.

ADDITIONAL FEE:

\$240 flat fee per session (for up to 20 people)

\$380 flat fee per session (for up to 40 people)

OPTION 4: Outdoor Laser Skirmish (1.5 hours)

All the thrill of paint ball without the mess or bruises, with the added bonus of specific team building outcomes (including leadership and strategy)... or just play for fun!

Includes approximately 3 x 15-minute playing blocks.

ADDITIONAL FEE: \$24 per person
(minimum 10 participants, maximum 40 participants)



ADDITIONAL OPTION

Mount Lofty Adventure Hub

Run independently by Adventure Hubs of South Australia within the Woodhouse property, Mount Lofty Adventure Hub is another option for real adrenaline seekers!

Heart pumping activities include:

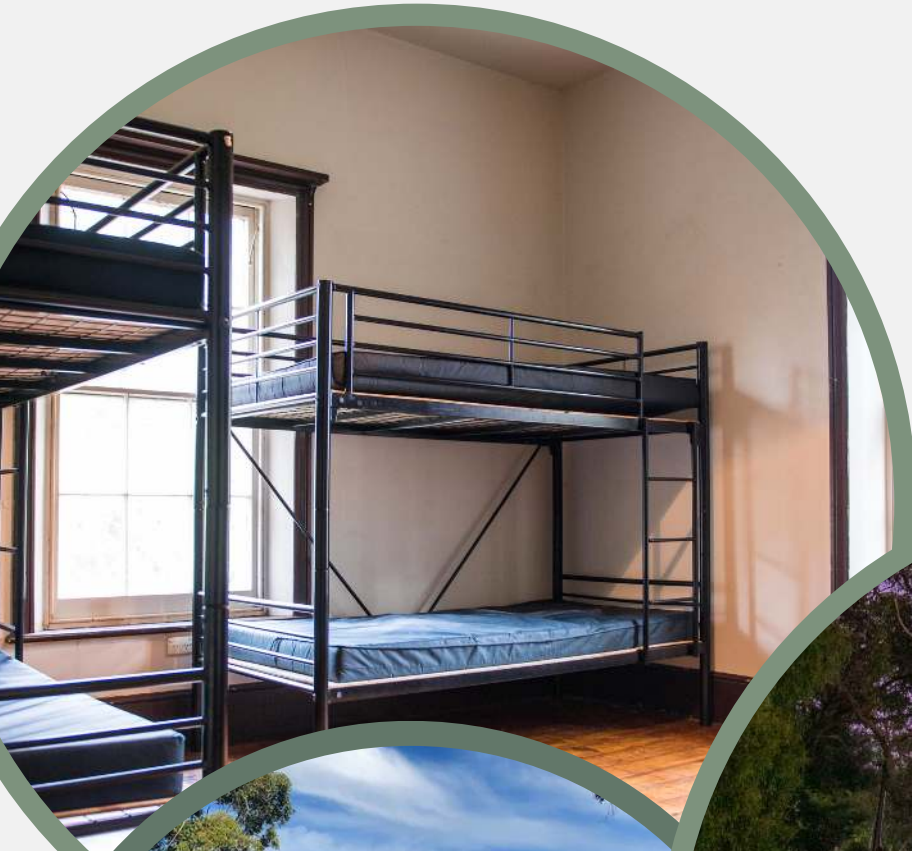
- 15-metre Adventure Tower with Rock Climbing and Abseiling
- 324-metre Forest Zipline
- 15-element High Ropes Challenge Course
- 3-person Mega Swing

Please contact [Adventure Hubs of South Australia](#) directly for pricing and bookings.



ADD ACCOMMODATION

Woodhouse Adventure Park offers a variety of experience-based accommodation options ranging from three bunkhouses, (including a stately two-storey heritage-listed mansion) to self-contained chalets, glamping in bell tents or caravan and camping adventures on our expansive unpowered sites.



KEEPING THE TROOPS FUELLED

Nothing maintains morale at conferences, meetings, workshops or on team building days more than good food!

Keep your conference or event troops fuelled by using our own in-house catering or you can do it yourself and BYO using SEEONEE's kitchen or private BBQ.

Alternatively you can always share the love by heading out to support some of our favourite local eateries (or cellar doors), with Crafers, Stirling, Aldgate, Bridgwater and Urailda all within a 10-minute drive.



Following are example menus for you to consider. However, if there is something specific you're looking for, please get in touch and we'll do our best to accommodate your request.

Our caterers are highly experienced with the most complex dietary requirements.

Please note pricing listed is for mid-week events. A small surcharge may apply on weekends.

SAMPLE MENU

\$37 per person, minimum 20 people

MORNING AND AFTERNOON TEA:

Please choose one for morning tea and one for afternoon tea:

Danish pastries assorted

Raspberry and white chocolate muffins

Lemonade scones with Beerenberg jam and whipped cream

Giant homemade choc chip cookies

Gourmet party pies; curry chicken, rosemary and lamb, pepper beef

Mini ham and cheese croissant with caramelised onion

Seasonal fruit platter

LUNCH:

Please choose one:

Gourmet wraps and baguettes (variety of fillings)

Vegetable Frittata and salad

Assortment of Lobethal Bakery pies, sausage rolls and pasties with fresh garden salad

Adelaide Hills leg ham and cheese croissants with caramelised onion and rocket salad

Warm chicken salad with roast capsicum, mixed lettuce, cherry tomatoes and baby cucumbers

Soup kettle of potato and leek or pumpkin, served with hot crusty bread

Bagels with smoked salmon, cream cheese and dill or ham, cheese and tomato chutney

HOT MEAL OPTIONS: add \$3.50 per person

Roast beef or chicken with warm veggie salad, roast potatoes and gravy

Creamy chicken and leek pie, green salad and selection of breads

Woodhouse's famous lasagne and Greek salad

Roast porchetta, apple sauce and warm veggie salad

BREAKFAST or **DINNER** menu and pricing available upon request



PLATTER SELECTIONS

Requires a minimum of 10 people, charged at \$14 per head, per platter.

Charcuterie Platter: Local Adelaide Hills cured meats, olives, Udder Delights cheddar cheese, pesto and pickled veg plus crackers and bread

Antipasto Platter: Marinated veg, olives, smoked salmon, cured meats, fresh fruit and dried fruits plus crackers and bread

Dips Platter: Three gourmet dips, vegetable batons, crackers and pita

Cheese Platter: Three Udder Delights cheeses, dried fruit, quince paste, crackers and lavosh

Dessert Platter: \$4.20 per item, per person.

Choose from: Italian donuts, sticky date cupcakes, choc-dipped strawberries, banana caramel tarts, lemon tarts, mini pavlovas with berries and cream

Seasonal Fruit platters can be arranged, P.O.A



GRAZING TABLE MENU

6 items \$31 per person, minimum 20 people
8 items \$41 per person, minimum 30 people
10 items \$51 per person, minimum 40 people

Gourmet party pies - curry chicken, rosemary and lamb, pepper beef

Mini ham and cheese croissants w caramelized onion

Smoked salmon & horseradish cream crostini

Meatballs and tomato chutney

Prawn and avocado salsa

Yorkshire pudding with rare beef

Arancini - pea, zucchini, mint

Bruschetta Chorizo tarts

Eggplant parmigiana

Vegetable Frittata

Caponata tarts

Vitello Tonato

Assorted sushi

Tuna pots

*Tuna Sashimi

*Cured Duck breast

*\$1.50 surcharge pp

BEVERAGES

Soft drinks and juices provided on request





SEEŌNEE

Team Building Base
Conferences
Meetings
Functions
Wellness

Contact Us



www.woodhouse.org.au
info@woodhouse.org.au



+61 (0)8 8339 3333



37 Spring Gully Road
PICCADILLY
South Australia 5151



**Woodhouse
Adventure Park**

TERMS & CONDITIONS

TENTATIVE BOOKINGS Held for 7 days.

CONFIRMATION To confirm your reservation a booking form (completed and signed) must be submitted accompanied with 50% of the room hire payment. Management reserves the right to release the space for resale if confirmation is not received within 7 days.

CANCELLATION All cancellation requests must be submitted in writing to: bookings@woodhouse.org.au The initial reservation deposit amount (50% of hire fee) is fully refundable if cancellation occurs within 30 days of payment and at least 60 days before arrival and forfeited thereafter. Full payment is required 60 days before arrival and is non-refundable or transferable to another date for any reason. Management may, at its discretion, agree to a request to transfer the booking to a new date.

FINAL NUMBERS Confirmation of final numbers, menu, beverages and any required payment needs to be made within 14 days to the event start date. Any additional changes incurred are to be paid at the conclusion of your event.

CATERING Special dietary requirements may incur additional charges of \$5 per day per person and non attendees catered for will be charged at quoted rate.

EXTENUATING CIRCUMSTANCES POLICY This Extenuating Circumstances Policy explains how cancellations are handled when unforeseen events beyond your control arise after booking and make it impractical or illegal to complete your booking. This Policy applies for reservations for accommodation, experiences and conferences. When this Policy allows for cancellation, it controls and takes precedence over the above cancellation policy. A full transfer/credit, refund or other considerations will be issued in the following instances:

- Site closure - SEEONEE and Woodhouse Adventure Park are closed on days with a Catastrophic Fire Danger Rating declared by the CFS
- Dangerous weather conditions - Management declared planned activities or general site unsafe for occupancy due to particularly dangerous weather conditions.
- Declared emergencies and epidemics - SA Government declared emergencies, epidemics, pandemics and public health emergencies and associated restrictions of the time.
- Government travel restrictions - Travel restrictions imposed by a government agency that prevent or prohibit travelling to, staying at or returning from Piccadilly, South Australia.

EARLY ARRIVAL / LATE DEPARTURE To guarantee either an early arrival or a late departure a fee may be applied for each instance. Please discuss this with reservation staff.

RESPONSIBILITIES The Scout Association (SA Branch) will not be responsible for cost of theft, loss or damage to property or personal effects of the hirer, not the hirers' staff, delegates or guests. Lost property is held for one week then donated to a charitable organisation.

CLEANING General cleaning is included in the room hire but should your event require excessive cleaning additional charges may be incurred.